

# CANYON CREEK PLAZA

5601-5667 SILVER CREEK VALLEY ROAD | SAN JOSE, CA 95138

Perform Properties

## Property Details

### Owned GLA

64,662 SF

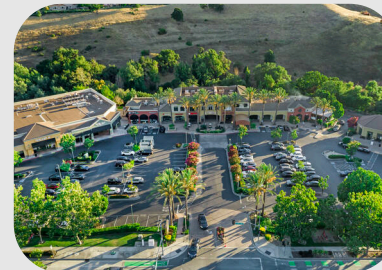
### Availability

1 Suite | 1,138 SF

### Overview

- Located on Silver Creek Valley Road at Beaumont Canyon Drive.
- High above south San Jose, the Evergreen Valley/Silver Creek neighborhood is an enclave of high-income households and beautiful homes in both planned and gated communities.
- This unique Silicon Valley property is anchored by New Seasons Market.
- Serves as a neighborhood hub with a mix of dining, retail, and service-oriented businesses, fostering a strong sense of community.

## Tenant Mix



# CANYON CREEK PLAZA

5601-5667 SILVER CREEK VALLEY ROAD | SAN JOSE, CA 95138

Perform Properties

## Demographics

	Population	Daytime Population	Households	Avg. HH Income	Med. HH Income
1 MILE	8,200	6,000	2,400	\$296,300	\$187,000
3 MILES	141,300	124,400	39,500	\$190,000	\$143,000
5 MILES	369,300	302,100	106,500	\$167,300	\$133,100



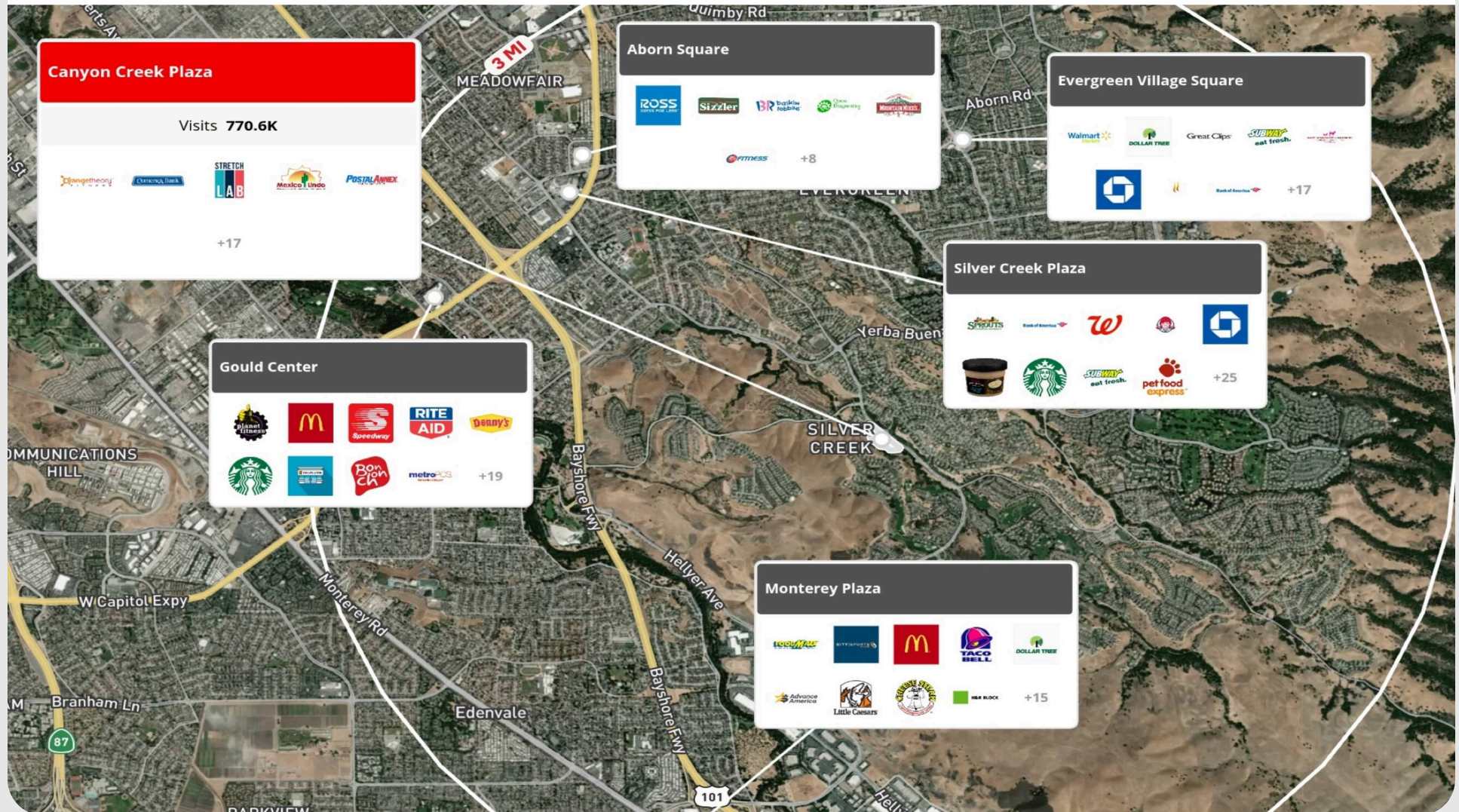


# CANYON CREEK PLAZA

5601-5667 SILVER CREEK VALLEY ROAD | SAN JOSE, CA 95138

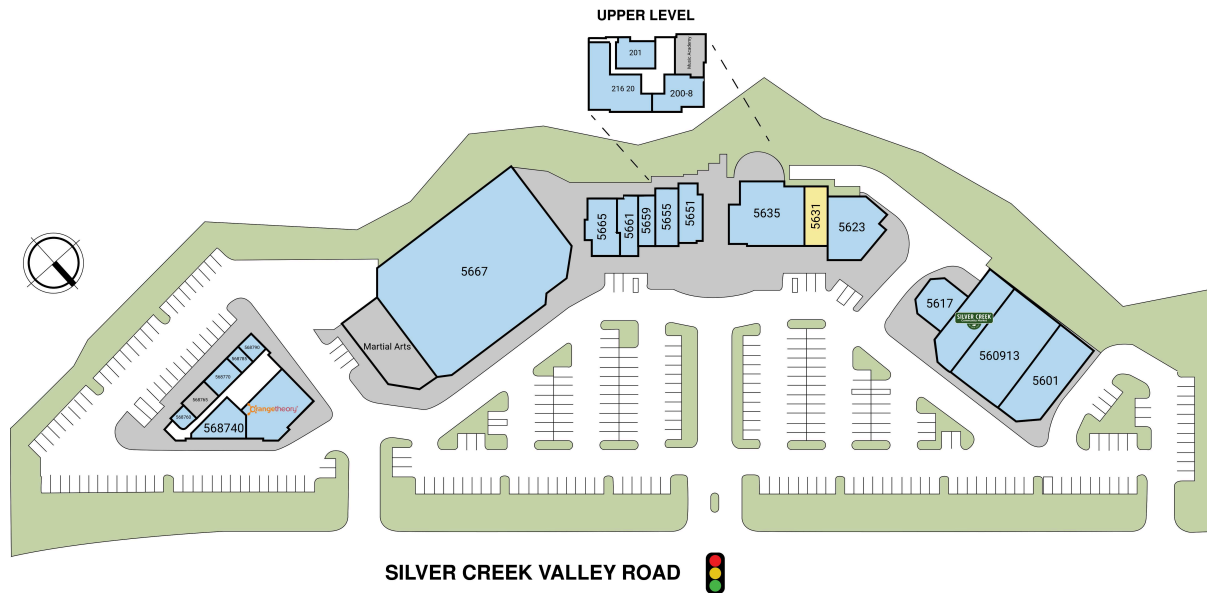
Perform Properties

## Market Aerial



5601-5667 SILVER CREEK VALLEY ROAD | SAN JOSE, CA 95138

# Site Plan



Suite	Tenant	GLA (SF)
5631	AVAILABLE	1,138
5667	SILVER CREEK COMMUNITY MARKET	25,000
560913	INTERO RES INC.	5,454
5601	COMERICA BANK	3,863
5623	CREEK EATERY	3,631
5635	MEXICO LINDO	3,164
568710	ORANGETHEORY FITNESS	2,778
5617	CANYON CREEK PET HOSPITAL	2,744
216 20	MINDI THAI DDS	2,480
200-8	ORANGE COAST TITLE CO.	2,445
5665	GIN GA SUSHI	1,809
5619	SILVER CREEK ACADEMIC ACADEMY	1,490
568740	STRETCH LAB	1,337
5651	CON AZUCAR CAFE	1,274
5655	Postal Annex	1,138
201	A1 CARE	1,013
5661	DREAMALITY	811
5659	S SALON	748
568770	PINNACLE ELITE CORP.	650
5687	EXECUSTAFF HR	650
568790	TONI JULIAN INTERNATIONAL	395
568785	AMERICAN INDIAN HEALTH	325
568760	ADHERE	325



# CANYON CREEK PLAZA

5601-5667 SILVER CREEK VALLEY ROAD | SAN JOSE, CA 95138

Perform Properties

## Get in Touch with Us

### Leasing

Tommy Gibbs

**408-542-0541**

**tgibbs@performproperties.com**

### Pop-up & Short-term Leasing

Specialty Leasing Team

**408-785-8472**

**specialtyleasing@performproperties.com**

### Property Management

April Sheffield

**858-255-4905**

**asheffield@performproperties.com**



*This document is for general information purposes only. Any and all features, matters and other information depicted hereon or contained herein are for illustrative marketing purposes only, are subject to modification without notice, are not intended to be relied upon by any party and are not intended to constitute representations or warranties as to any matter, including ownership of the real property depicted hereon or any part thereof, the size and nature of improvements (or that any improvements will be constructed or will continue to exist as depicted), or the identity or nature of any occupants thereof.*

Learn more about Canyon Creek Plaza at [performproperties.com/property/canyon-creek-plaza](https://performproperties.com/property/canyon-creek-plaza)

