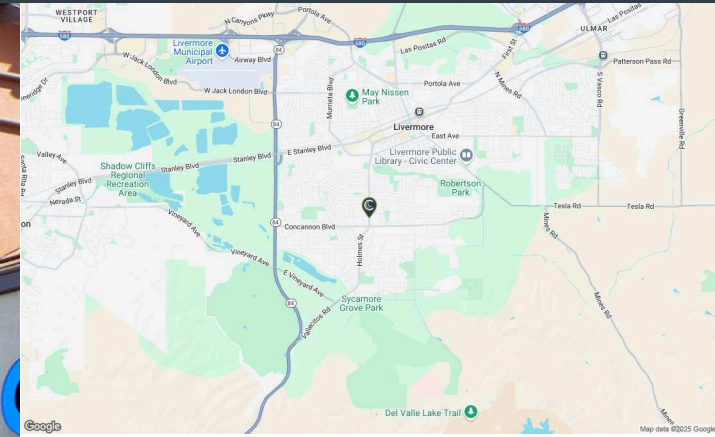


GRANADA SHOPPING CENTER

1803-1951 HOLMES ST // LIVERMORE, CA,



ANYTIME FITNESS



OWNED GLA
71,525 SF

LOCATION
Longitude: -121.780336
Latitude: 37.662495

DEMOGRAPHICS	1 MILE	3 MILES	5 MILES
Population	14,365	61,554	111,962
Avg Income	\$196,316	\$191,381	\$204,660

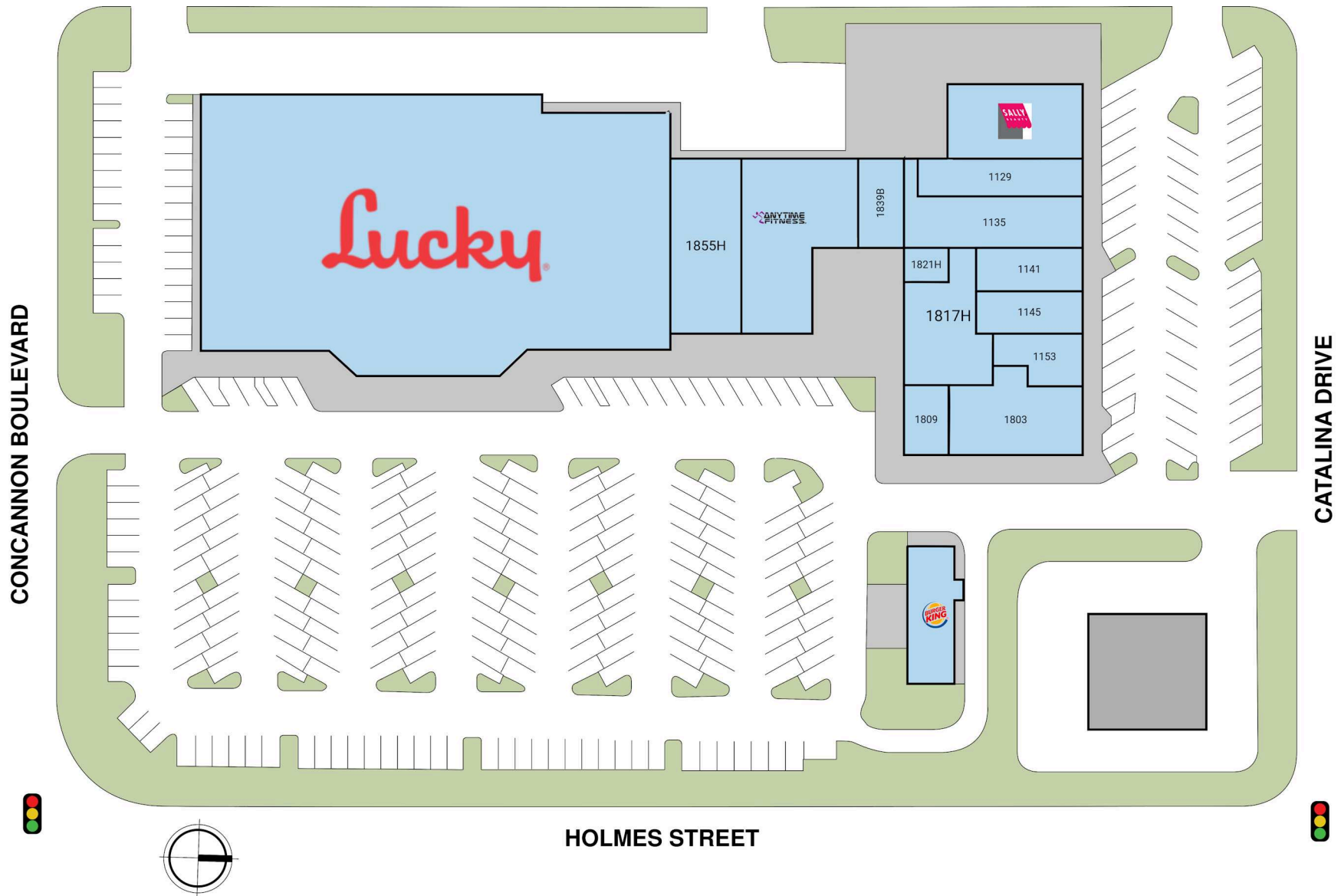
- This 69,325 SF shopping center is anchored by Lucky Supermarket, ensuring consistent foot traffic and a diverse customer base.
- Located near Livermore Valley Charter Preparatory School, the center benefits from the daily influx of students, faculty, and staff, enhancing visibility and potential customer base.
- Located near Wente Vineyards and Livermore Valley Stadium, the area offers scenic views and recreational opportunities, enhancing the overall appeal of the location.



FOR LEASING INFORMATION
Amber Wright
408.460.3275
awright@performproperties.com
www.ShopCore.com

GRANADA SHOPPING CENTER

1803-1951 HOLMES ST // LIVERMORE, CA,



This document is for general information purposes only. Any and all features, matters and other information depicted hereon or contained herein are for illustrative marketing purposes only, are subject to modification without notice, are not intended to be relied upon by any party and are not intended to constitute representations or warranties as to any matter, including ownership of the real property depicted hereon, the size and nature of improvements (or that any improvements will be constructed or will continue to exist as depicted), or the identity or nature of any occupants thereof.



FOR LEASING INFORMATION
Amber Wright
408.460.3275
awright@performproperties.com
www.ShopCore.com

GRANADA SHOPPING CENTER

1803-1951 HOLMES ST // LIVERMORE, CA,

SUITE#	Tenant Name	GLA(SF)	SUITE#	Tenant Name	GLA(SF)	SUITE#	Tenant Name	GLA(SF)
PAD	BURGER KING	2,200 SF	1145	DEEP CLEAN	1,320 SF	1821H	THE COUNTRY BEAUTY	450 SF
1125	SALLY BEAUTY SUPPLY	2,469 SF	1153	ERNIE'S LIQUORS	1,631 SF		SALON	
1129	MOUNTAIN MIKE'S PIZZA	2,319 SF	1803	COUNTRY WAFFLES	2,970 SF	1839B	GLAMOUR NAIL	1,313 SF
1135	AUSTRALIAN TAN	2,732 SF	1809	UNCLE CREDIT UNION	1,000 SF	1855F	ANYTIME FITNESS	5,296 SF
1141	AIM MAIL CENTER	1,320 SF	1817H	AMANDEEP SINGH GILL	3,258 SF	1855H	FREMONT BANK	3,846 SF
						1951H	LUCKY STORES	39,401 SF

This document is for general information purposes only. Any and all features, matters and other information depicted hereon or contained herein are for illustrative marketing purposes only, are subject to modification without notice, are not intended to be relied upon by any party and are not intended to constitute representations or warranties as to any matter, including ownership of the real property depicted hereon, the size and nature of improvements (or that any improvements will be constructed or will continue to exist as depicted), or the identity or nature of any occupants thereof.



FOR LEASING INFORMATION
Amber Wright
408.460.3275
awright@performproperties.com
www.ShopCore.com