

# UNIVERSITY PALMS

4250 ALAFAYA TRAIL | OVIEDO, FL 32765



## Property Details

### Owned GLA

99,172 SF

### Availability

0 Suites | 0 SF

### Parking Spaces

472

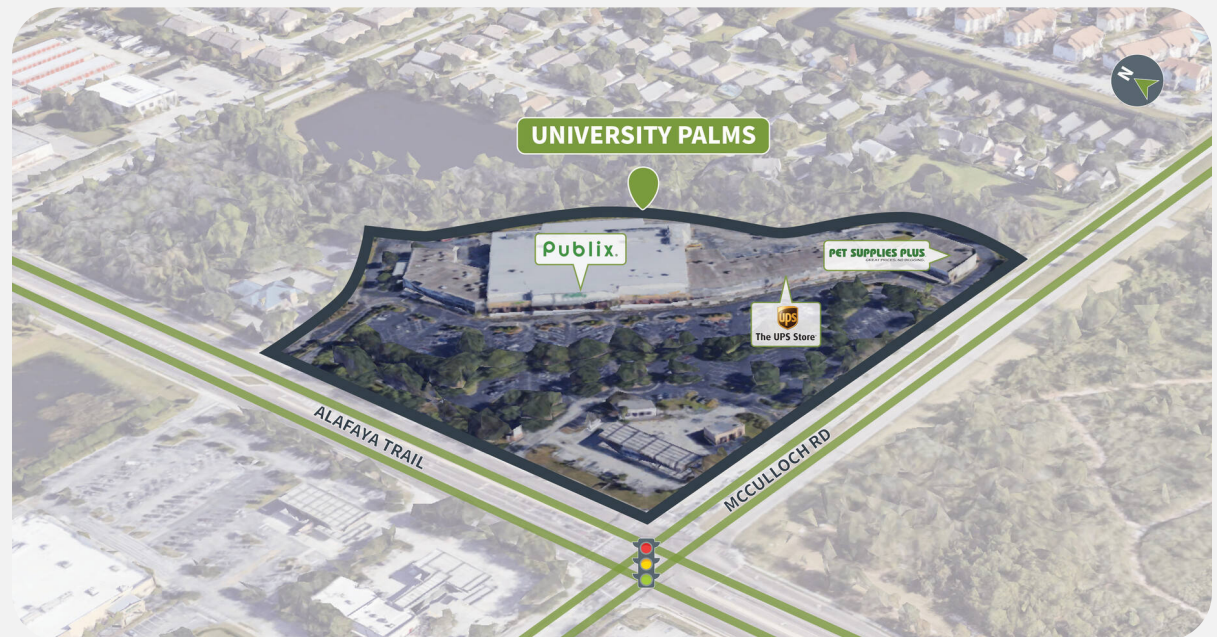
### Overview

- Located at the lighted intersection of Alafaya Trail and McCulloch Road, and directly adjacent to UCF and a student population of 68,000
- The center is surrounded by multi-family homes and college housing
- Combined traffic counts of 69,000+ VPD
- UCF is nationally recognized as one of the largest colleges in the country, with 68,000+ students and 6,500 student housing units on the main campus

## Tenant Mix

Publix.

PET SUPPLIES PLUS.



# UNIVERSITY PALMS

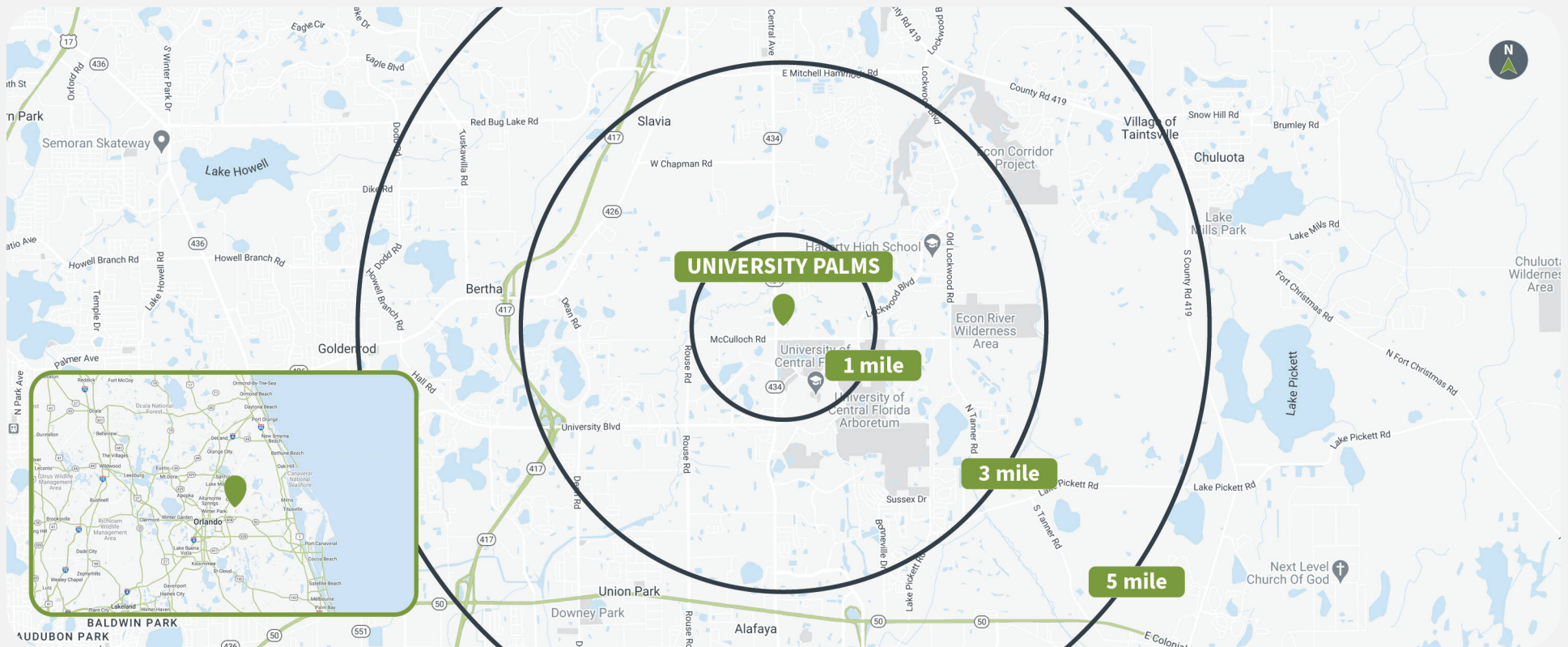
4250 ALAFAYA TRAIL | OVIEDO, FL 32765



## Demographics

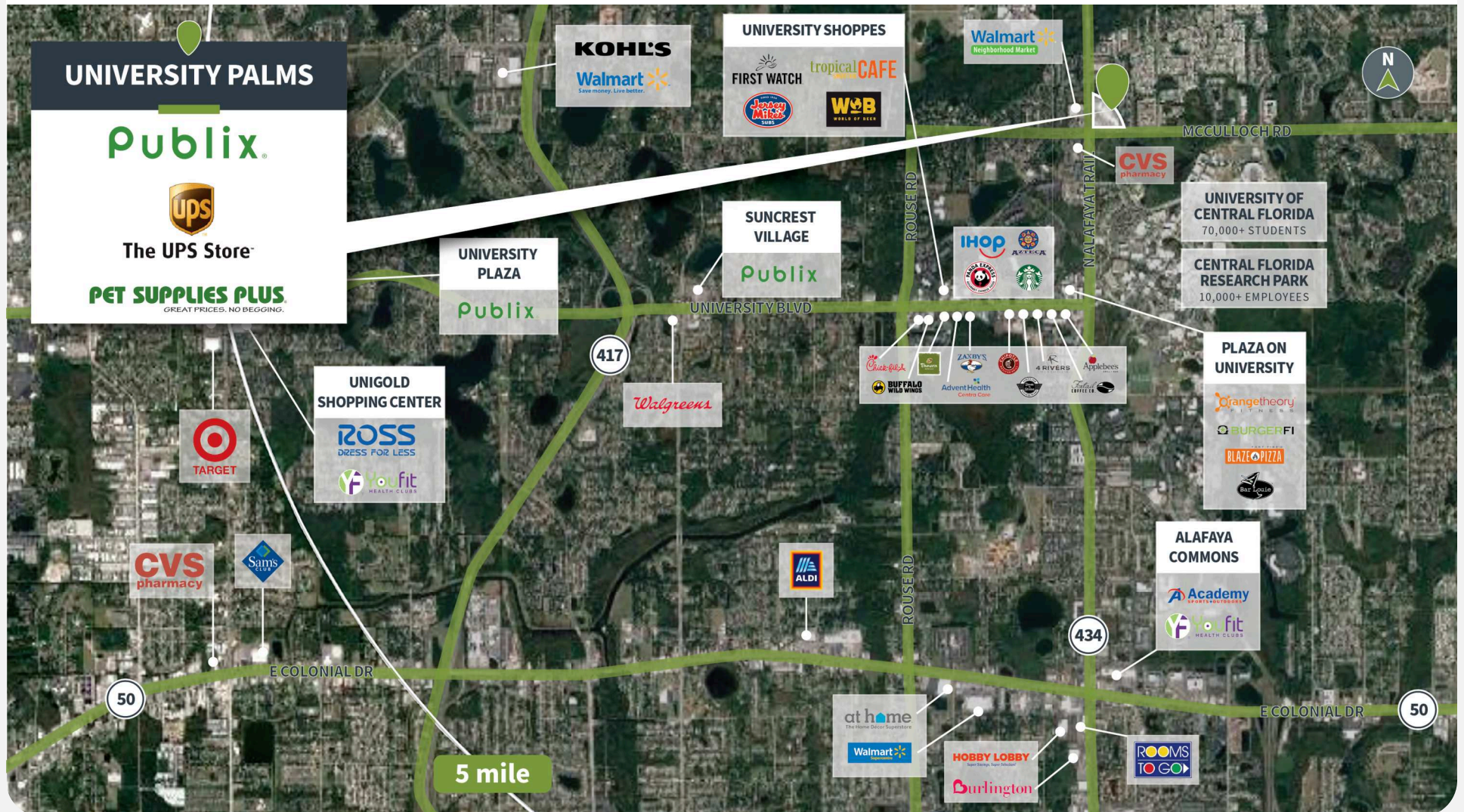
Source: Creditintell, 2024. View more demographics [here](#)

	Population	Daytime Population	Households	Avg. HH Income	Med. HH Income
1 MILE	7,043	5,319	2,868	\$83,233	\$64,926
3 MILES	84,294	150,606	26,371	\$96,190	\$81,556
5 MILES	204,246	243,068	70,672	\$98,210	\$82,330





4250 ALAFAYA TRAIL | OVIEDO, FL 32765



# UNIVERSITY PALMS

4250 ALAFAYA TRAIL | OVIEDO, FL 32765



## Site Plan



Suite	Tenant	GLA (SF)
COA	PUBLIX SUPER MARKET	56,077
AOA	PET SUPPLIES PLUS	7,908
DOH	KEKE'S BREAKFAST CAFE	5,442
BOR	Amscot Financial	4,042
DOA	GIOVANNI ITALIAN RISTORANTE	3,324
BOT	SOUTH BEACH TANNING	3,192
B0C	PAT'S FOR LIQUOR	3,051
B0M	CORUS ORTHODONISTS	2,777
B0G	DRAGON COURT RESTAURANT	2,300
B0J	GOTOBRAZILS	1,622
B0D	THE UPS STORE	1,493
COE	CHEWY BOBA COMPANY	1,492
B0E	CHEWY BOBA COMPANY	1,492
DOF	JOURY ICE CREAM & COFFEE	1,400
DOE	UNIVERSITY PALMS CLEANERS	1,400
B0H	AVENUE NAILS	1,400
B0P	3 NATIVES ACAI AND JUICE BAR	1,202
B0L	First Choice Urgent Care	1,050



# UNIVERSITY PALMS

4250 ALAFAYA TRAIL | OVIEDO, FL 32765



## Get in Touch with Us

### Leasing

Matthew Vender

**215.330.4220**

**[mvender@shopcore.com](mailto:mvender@shopcore.com)**

### Pop-up & Short-term Leasing

MyShop by ShopCore

**312.798.5210**

**[myshop@shopcore.com](mailto:myshop@shopcore.com)**

### Property Management

Lataraini Carter-Busch

**215.330.4206**

**[lcbusch@shopcore.com](mailto:lcbusch@shopcore.com)**



*This document is for general information purposes only. Any and all features, matters and other information depicted hereon or contained herein are for illustrative marketing purposes only, are subject to modification without notice, are not intended to be relied upon by any party and are not intended to constitute representations or warranties as to any matter, including ownership of the real property depicted hereon or any part thereof, the size and nature of improvements (or that any improvements will be constructed or will continue to exist as depicted), or the identity or nature of any occupants thereof.*

Learn more about University Palms at [shopcore.com/property/university-palms](https://shopcore.com/property/university-palms)