

# SUMMIT POINT

840 GLYNN STREET S | FAYETTEVILLE, GA 30214



## Property Details

### Owned GLA

111,970 SF

### Availability

10 Suites | 20,892 SF

### Parking Spaces

716

### Overview

- Located on GA Highway 85, the main artery for the retail corridor of Fayette County with 5 points of access and two signalized entry/exit points
- Average household income of \$133,752 within a one mile radius of the center
- Nearby Trilith Studios, a major film production center community with retail, restaurants, offices, residential, soundstages, parks and more
- Two hotels and a cinema are slated to join the area soon

## Tenant Mix

Publix



# SUMMIT POINT

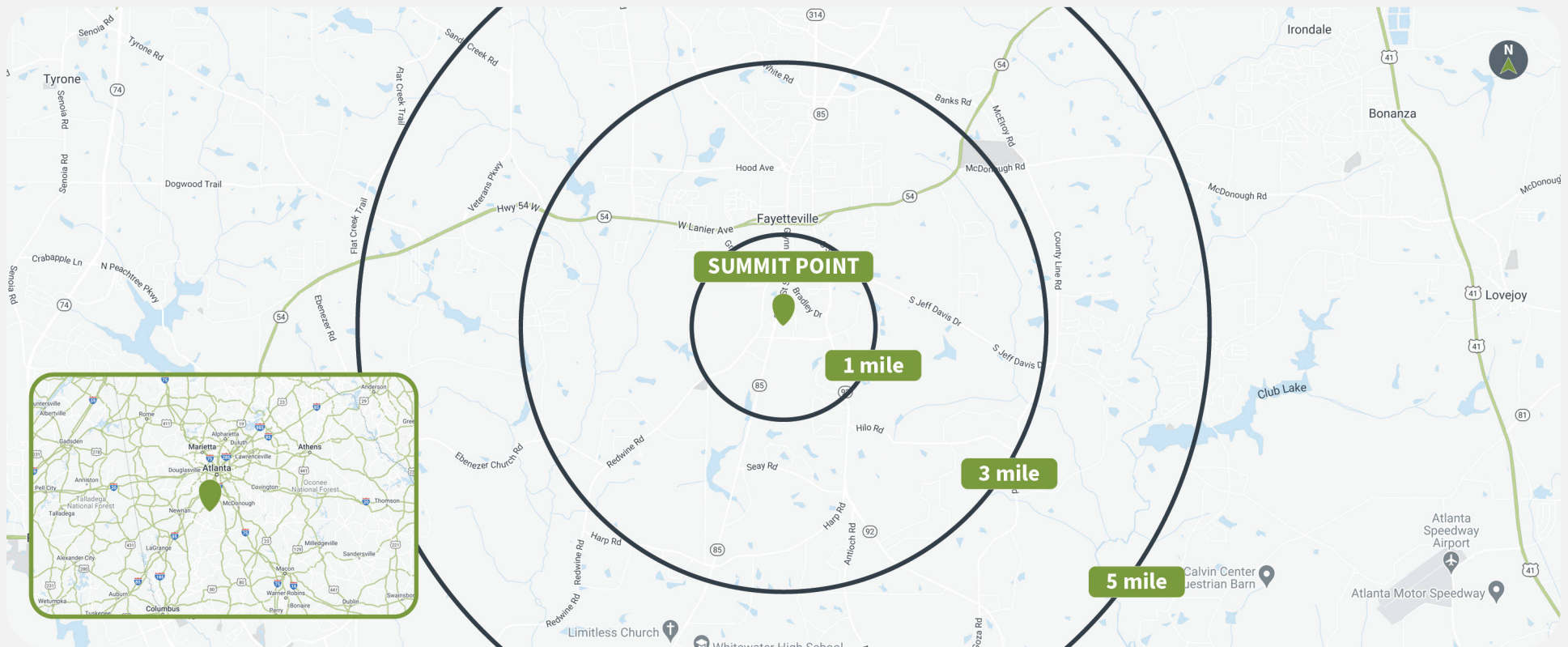
840 GLYNN STREET S | FAYETTEVILLE, GA 30214



## Demographics

Source: Creditintell, 2024. View more demographics [here](#)

	Population	Daytime Population	Households	Avg. HH Income	Med. HH Income
1 MILE	3,753	3,773	1,332	\$120,414	\$104,134
3 MILES	22,704	21,659	8,461	\$107,058	\$89,860
5 MILES	52,584	49,208	18,945	\$114,840	\$95,351



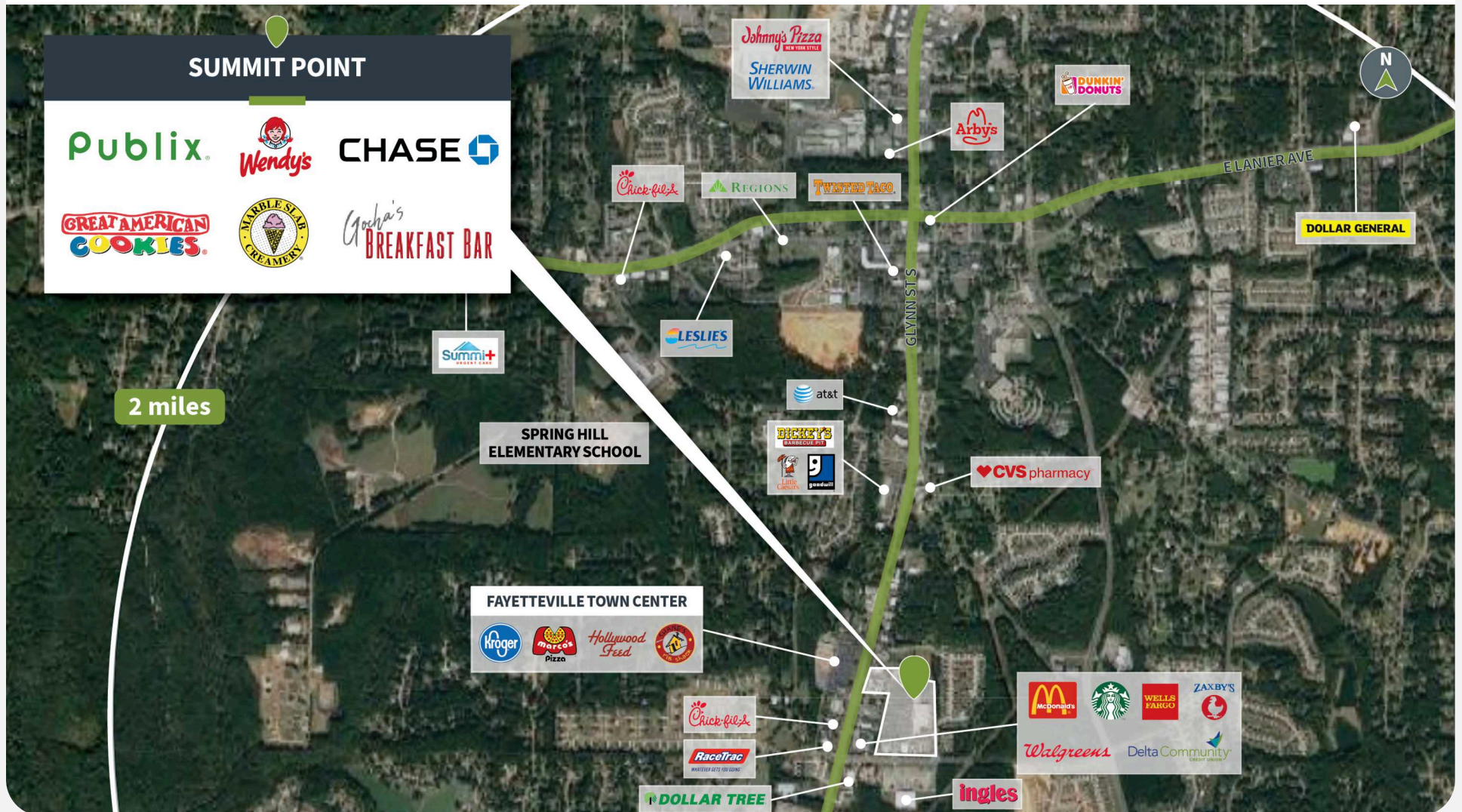


# SUMMIT POINT

840 GLYNN STREET S | FAYETTEVILLE, GA 30214



## Competition Aerial

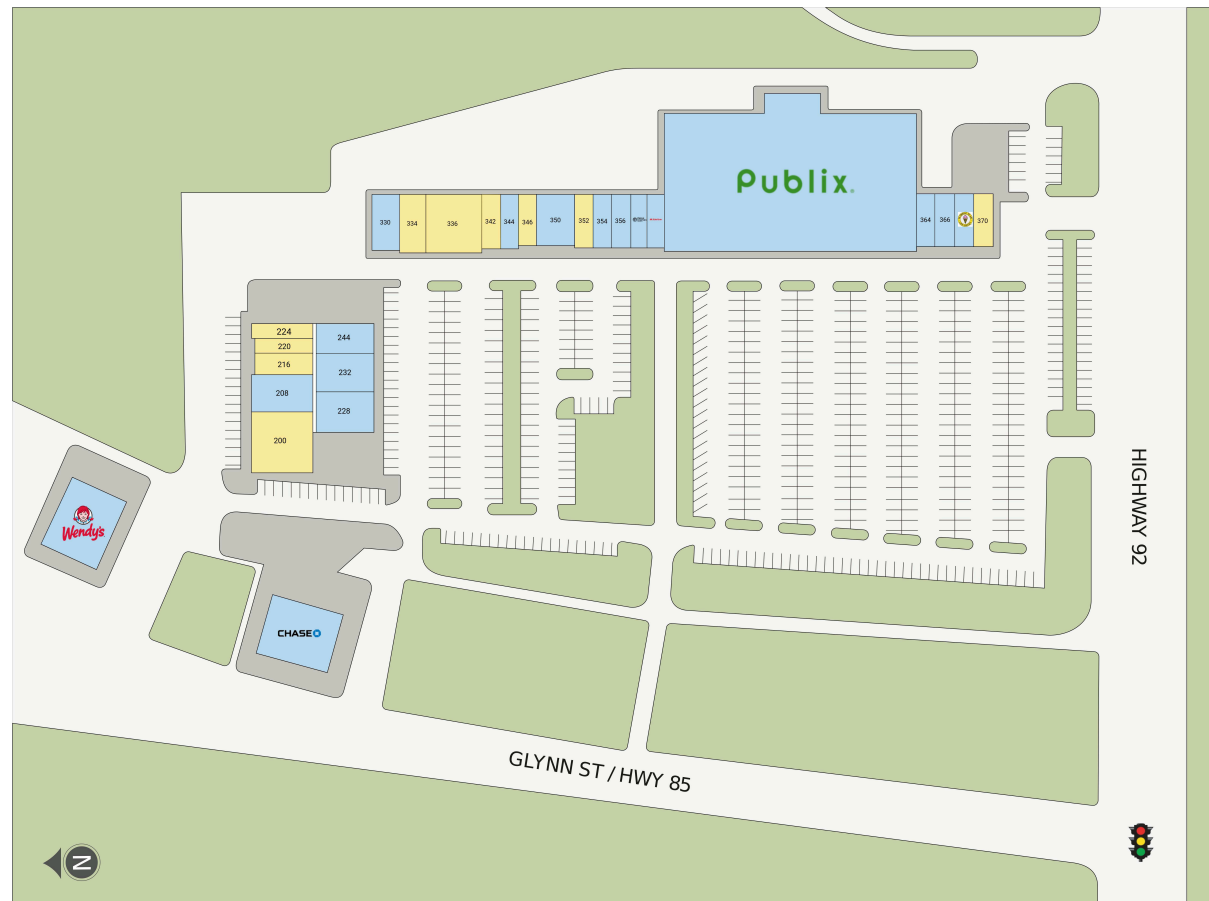


# SUMMIT POINT

840 GLYNN STREET S | FAYETTEVILLE, GA 30214



## Site Plan



Suite	Tenant	GLA (SF)
200	AVAILABLE	4,800
336	AVAILABLE	4,200
334	AVAILABLE	2,147
216	AVAILABLE	1,820
370	AVAILABLE	1,425
342	AVAILABLE	1,380
352	AVAILABLE	1,300
346	AVAILABLE	1,300
224	AVAILABLE	1,260
220	AVAILABLE	1,260
362	PUBLIX SUPER MARKET	54,379
228	PARTNERS II PIZZA	4,200
820	CHASE BANK	4,072
232	Fit Body Boot Camp	3,660
800	WENDY'S	3,326
208	J.R. Crickets	3,060
350	Lush Nail Bar	2,640
244	Gocha's Breakfast Bar	2,520
330	ROYAL CHEF	2,100
366	THE JOINT CHIROPRACTIC	1,400
360	STATE FARM INSURANCE	1,400
358	MERLE NORMAN	1,400
368	MARBLE SLAB CREAMERY	1,380
356	Topics Hair Salon	1,380
354	My Lifestyle Smoothie	1,380
344	A PLUS BOUTIQUE	1,380
364	The Edge Thread & Wax	1,361



# SUMMIT POINT

840 GLYNN STREET S | FAYETTEVILLE, GA 30214



## Get in Touch with Us

### Leasing

Catie Whorton  
**470.763.8951**  
[cwhorton@shopcore.com](mailto:cwhorton@shopcore.com)

### Pop-up & Short-term Leasing

MyShop by ShopCore  
**312.798.5210**  
[myshop@shopcore.com](mailto:myshop@shopcore.com)

### Property Management

Lataraini Carter-Busch  
**215.330.4206**  
[lcbusch@shopcore.com](mailto:lcbusch@shopcore.com)



*This document is for general information purposes only. Any and all features, matters and other information depicted hereon or contained herein are for illustrative marketing purposes only, are subject to modification without notice, are not intended to be relied upon by any party and are not intended to constitute representations or warranties as to any matter, including ownership of the real property depicted hereon or any part thereof, the size and nature of improvements (or that any improvements will be constructed or will continue to exist as depicted), or the identity or nature of any occupants thereof.*

Learn more about Summit Point at [shopcore.com/property/summit-point](https://shopcore.com/property/summit-point)